

# **Liberia Ebola SitRep no. 74**

**Ministry of Health and Social Welfare**

**July 28, 2014**

# Cases

	National	Bomi County	Bong County	Gbarpolu County	Grand Bassa	Grand Cape Mount	Grand Gedeh	Lofa County	Margibi County	Maryland County	Montserrado County	Nimba County
New Case/s (Suspected)	0	0	0	0	0	0	0	0	0	0	0	0
New Case/s (Probable)	30	0	0	0	0	0	0	27	0	0	2	1
New case/s (confirmed)	1	0	0	0	0	0	0	0	0	0	0	1
Total suspected cases	101	0	16	0	0	0	1	54	2	0	27	1
Total probable cases	156	15	13	0	0	0	0	80	2	0	44	2
Total confirmed cases	95	7	10	0	0	0	0	44	2	0	29	3
Total Number of Conformed Cases of Sierra Leonean Nationality	11	0	0	0	0	0	0	11	0	0	0	0
Total Number of Conformed Cases of Guinean Nationality	0	0	0	0	0	0	0	0	0	0	0	0
Cumulative (confirmed, probable, suspected) cases	352	22	39	0	0	0	1	178	6	0	100	6

# Cases among HCWs

	National	Bomi County	Bong County	Gbarpolu County	Grand Bassa	Grand Cape Mount	Grand Gedeh	Lofa County	Margibi County	Maryland County	Montserrado County	Nimba County
Newly Reported Cases in HCW on 28th July 2014	2	0	0	0	0	0	0	1	0	0	0	1
Cumulative cases among HCW	45	0	20	0	0	0	0	11	0	0	13	1
Newly Reported deaths in HCW on 28th July 2014	1	0	0	0	0	0	0	1	0	0	0	0
Cumulative deaths among HCW	26	0	3	0	0	0	0	6	0	0	17	0

# Isolation and Discharges

	National	Bomi County	Bong County	Gbarpolu County	Grand Bassa	Grand Cape Mount	Grand Gedeh	Lofa County	Margibi County	Maryland County	Montserrado County	Nimba County
New admissions on 28th July 2014	11	0	0	0	0	0	0	9	0	0	2	0
Total no. currently in Treatment Units	40	0	0	0	0	0	0	23	0	0	17	0
Total discharges on 28th July 2014	4	0	0	0	0	0	0	2	0	0	2	0
Cumulative admission/isolation	40	0	0	0	0	0	0	23	0	0	17	0

# Deaths

	National	Bomi County	Bong County	Gbarpolu County	Grand Bassa	Grand Cape Mount	Grand Gedeh	Lofa County	Margibi County	Maryland County	Montserrado County	Nimba County
Newly reported deaths 28th July 2014	15	0	0	0	0	0	0	8	0	0	4	3
Total death/s in confirmed cases	76	1	4	0	0	0	0	38	2	0	30	1
Total death/s in probable cases	74	1	3	0	0	0	0	27	0	0	41	2
Total death/s in suspected cases	20	0	1	0	0	0	1	14	2	0	2	0
Total death/s in confirmed, probable, suspected cases	170	2	8	0	0	0	1	79	4	0	73	3
Case Fatality Rate (CFR) - Confirmed & Probable Cases	<b>59.8</b>	<b>9.1</b>	<b>30.4</b>	<b>0.0</b>	<b>0.0</b>	<b>0.0</b>	<b>0.0</b>	<b>52.4</b>	<b>50.0</b>	<b>0.0</b>	<b>97.3</b>	<b>60.0</b>



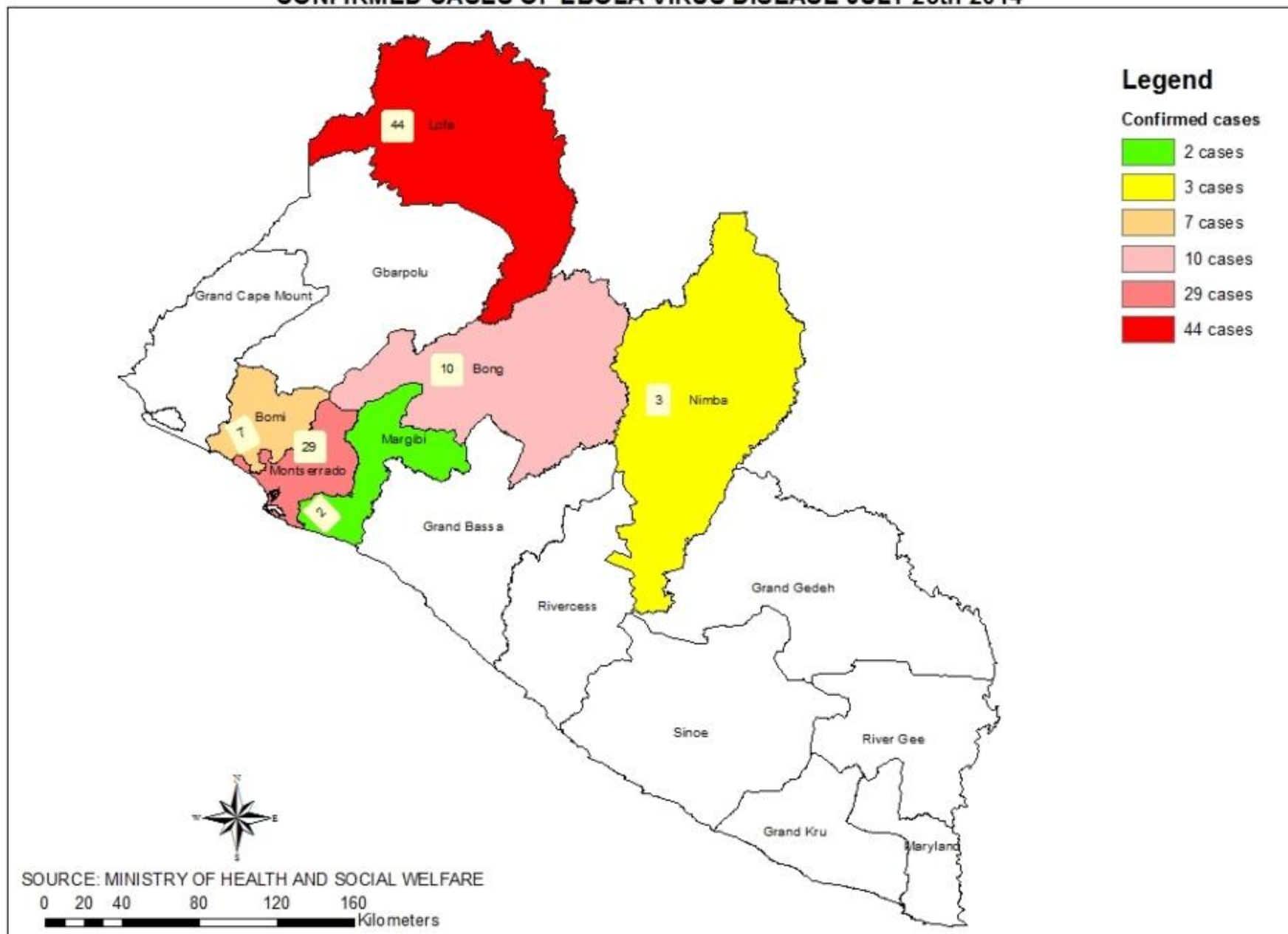


# Ebola Disease Outbreak (March 22-July 28, 2014)

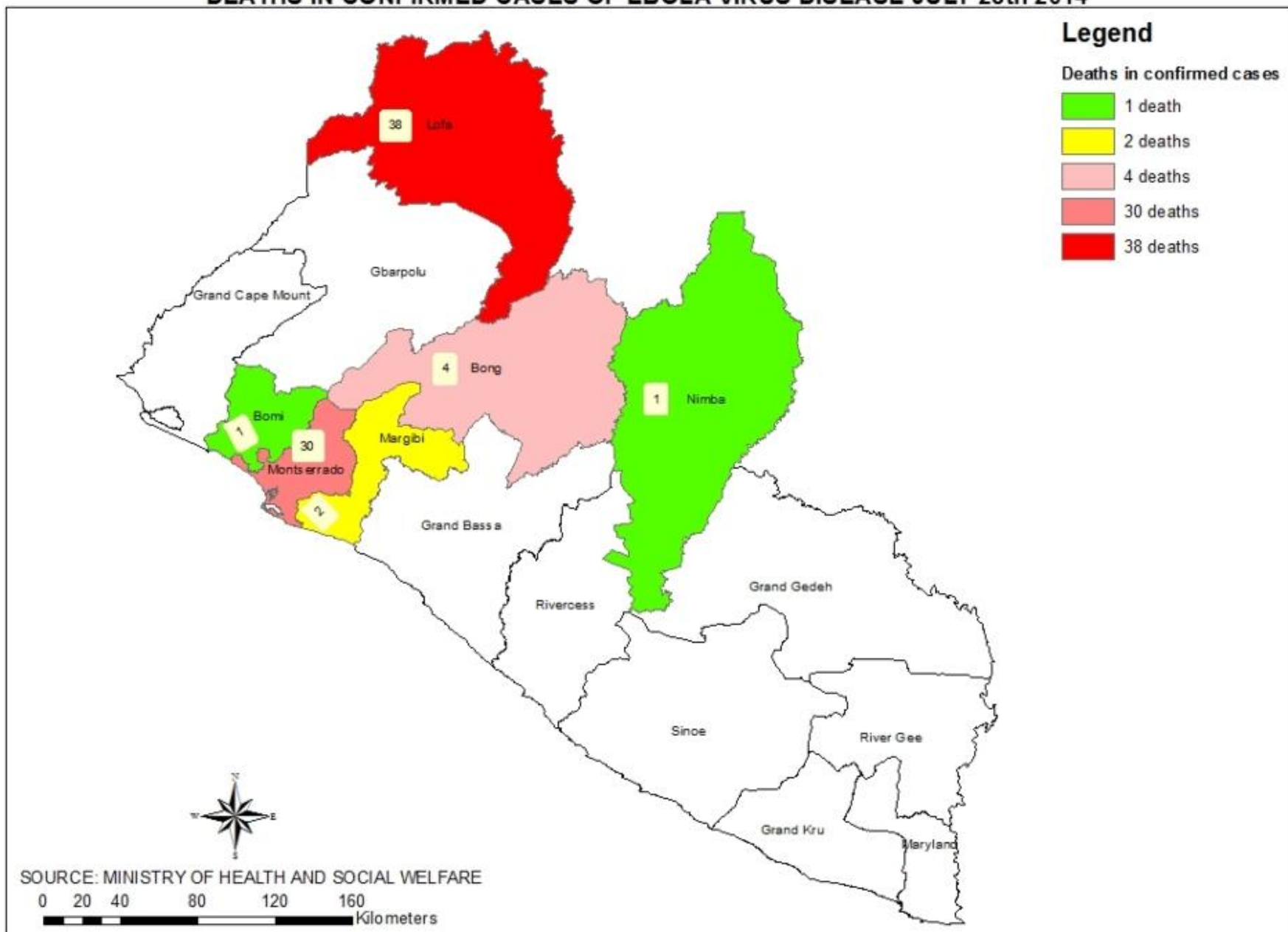
Table 3: Cumulative Ebola Disease Outbreak in Liberia (March 22 -July 28, 2014)												
Cases												
	National	Bomi County	Bong County	Gbarpolu County	Grand Bassa	Grand Cape Mount	Grand Gedeh	Lofa County	Margibi County	Maryland County	Montserrado County	Nimba County
Total Case/s (Suspected)	101	0	16	0	0	0	1	54	2	0	27	1
Total Case/s (Probable)	158	15	13	0	0	0	0	82	2	0	44	2
Total case/s (confirmed)	101	7	10	0	0	0	0	48	4	0	29	3
Cumulative (confirmed, probable, suspected) cases	360	22	39	0	0	0	1	184	8	0	100	6
Health Care Workers												
Cumulative cases among HCW	47	0	20	0	0	0	0	13	0	0	13	1
Cumulative deaths among HCW	28	0	3	0	0	0	0	8	0	0	17	0
Deaths												
Total death/s in confirmed cases	82	1	4	0	0	0	0	42	4	0	30	1
Total death/s in probable cases	76	1	3	0	0	0	0	29	0	0	41	2
Total death/s in suspected cases	23	0	1	0	0	0	1	15	3	0	3	0
Total death/s in confirmed, probable, suspected cases	181	2	8	0	0	0	1	86	7	0	74	3
Cumulative CFR (March 22 - July 28, 2014)	61.0	9.0909	30.43	#### #	#### #	#### #	#### #	54.6	66.7	#### #	97.3	60



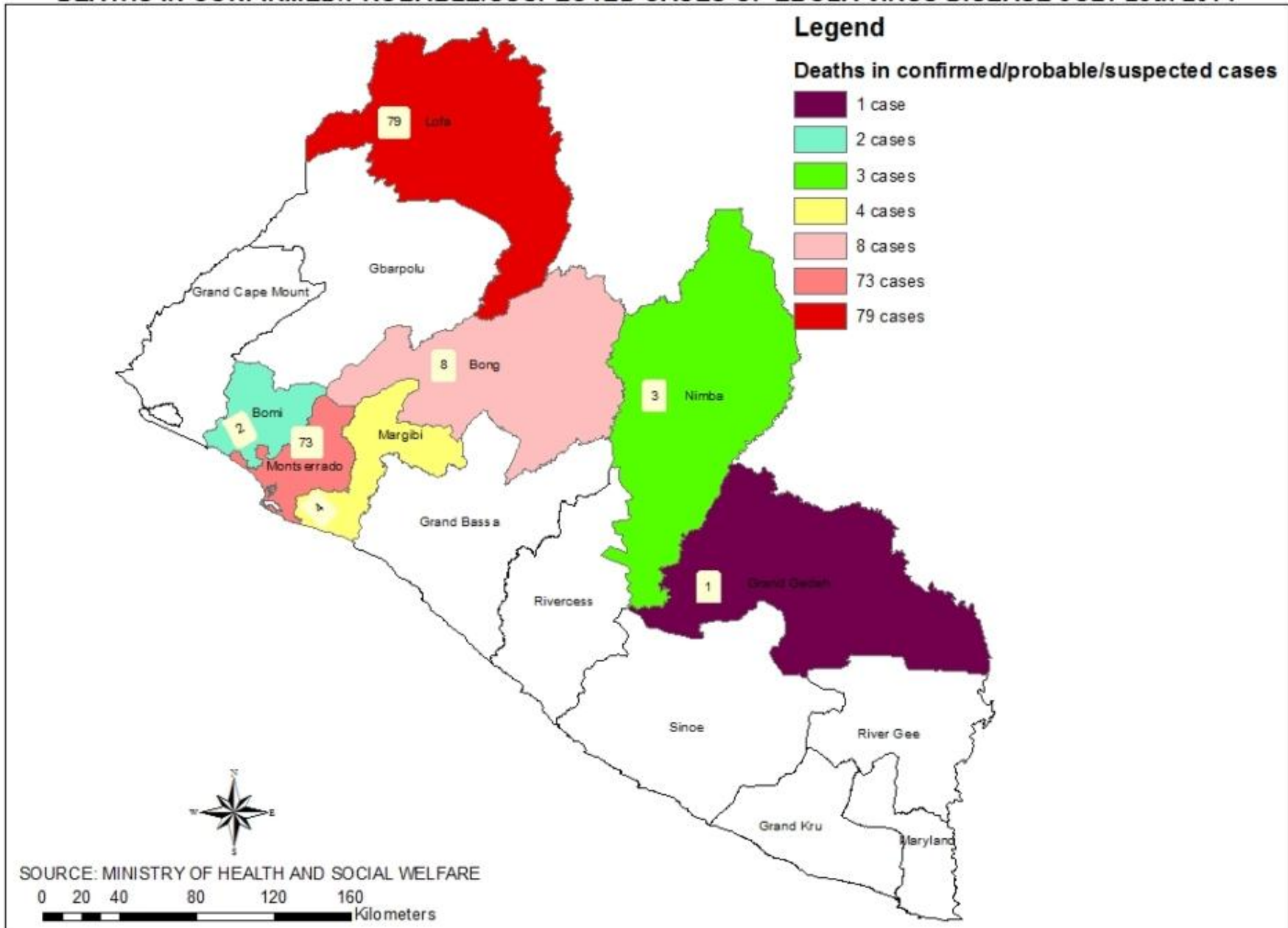
# CONFIRMED CASES OF EBOLA VIRUS DISEASE JULY 28th 2014



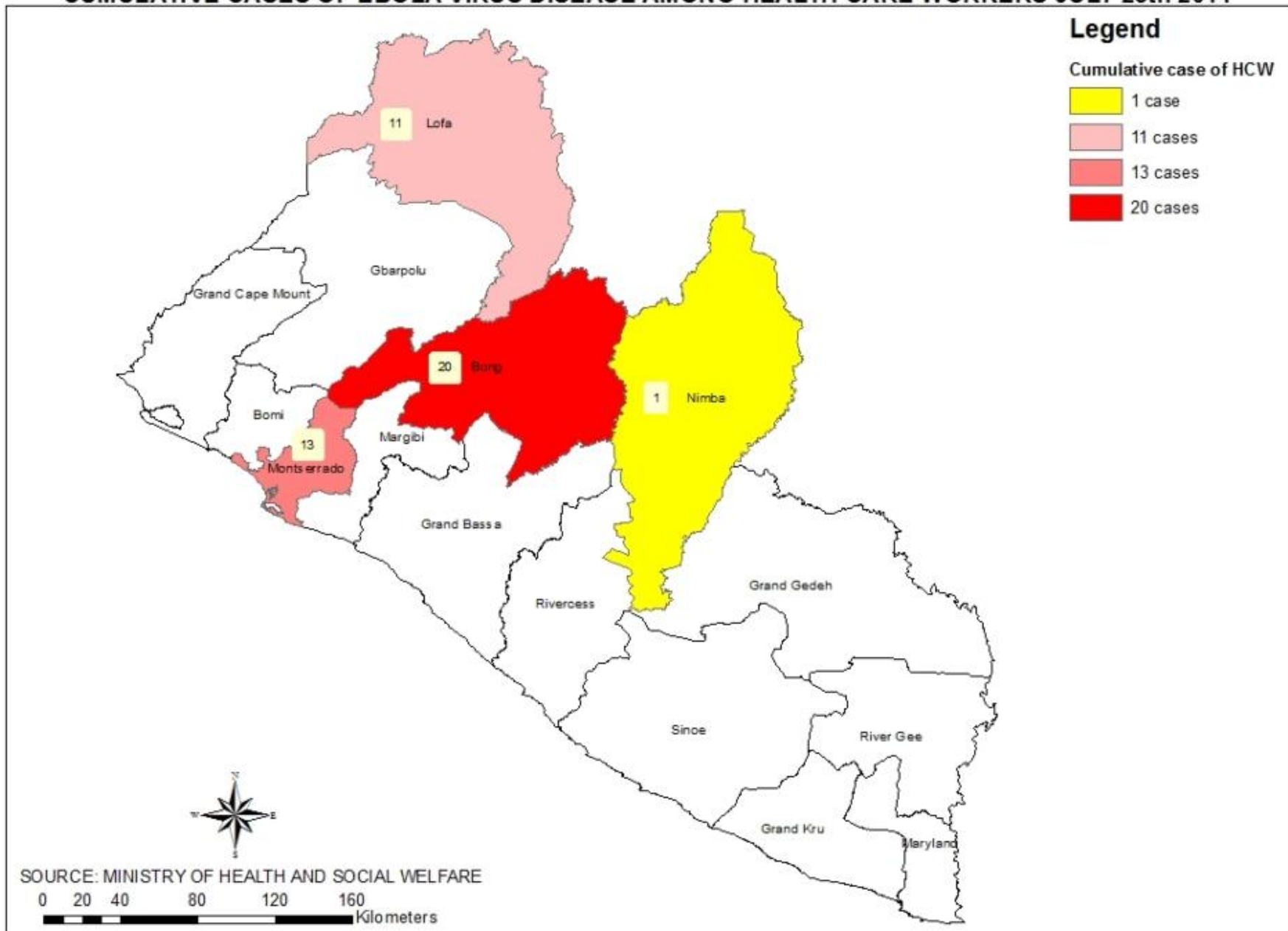
# DEATHS IN CONFIRMED CASES OF EBOLA VIRUS DISEASE JULY 28th 2014



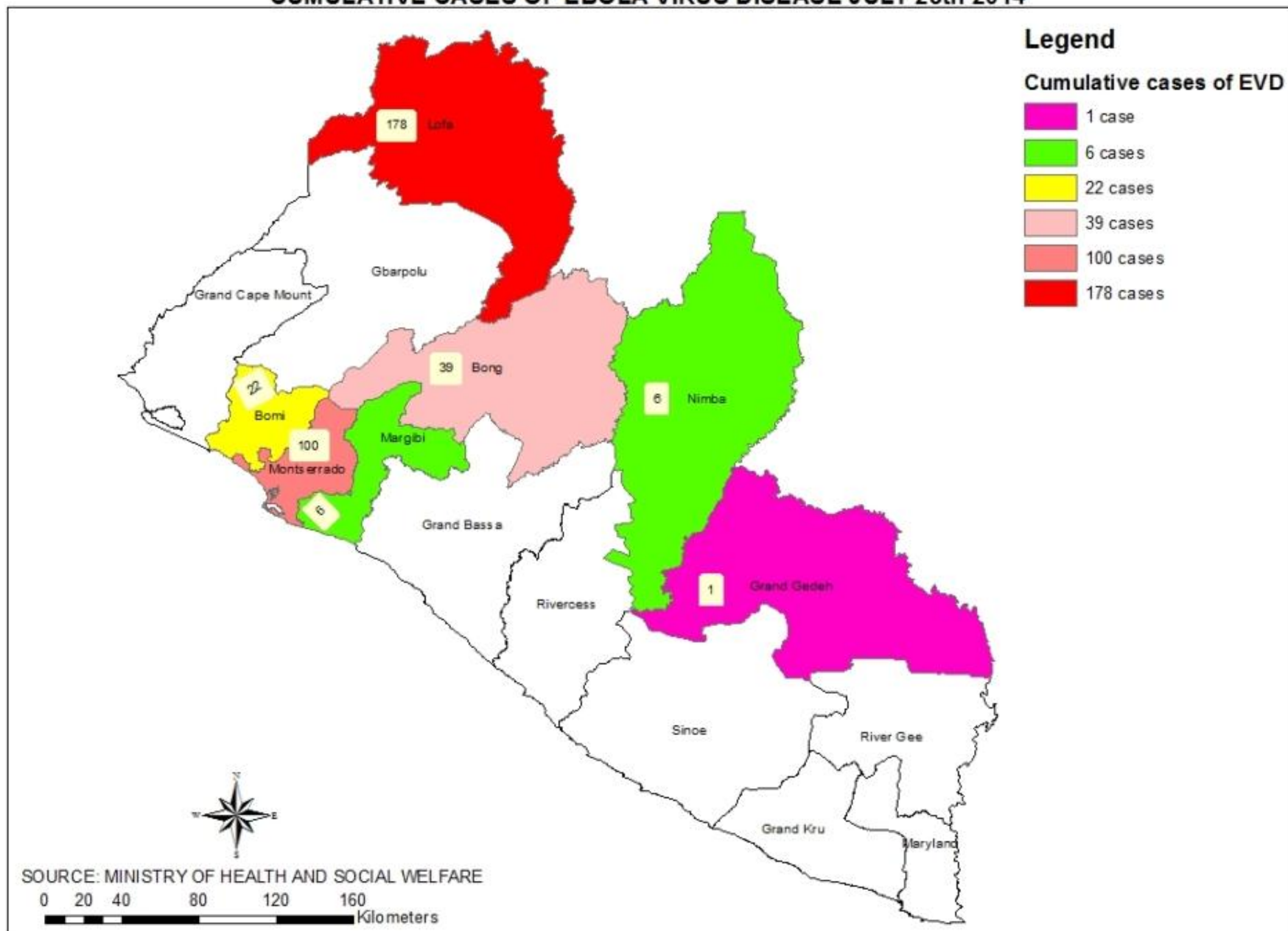
# DEATHS IN CONFIRMED/PROBABLE/SUSPECTED CASES OF EBOLA VIRUS DISEASE JULY 28th 2014



# CUMULATIVE CASES OF EBOLA VIRUS DISEASE AMONG HEALTH CARE WORKERS JULY 28th 2014

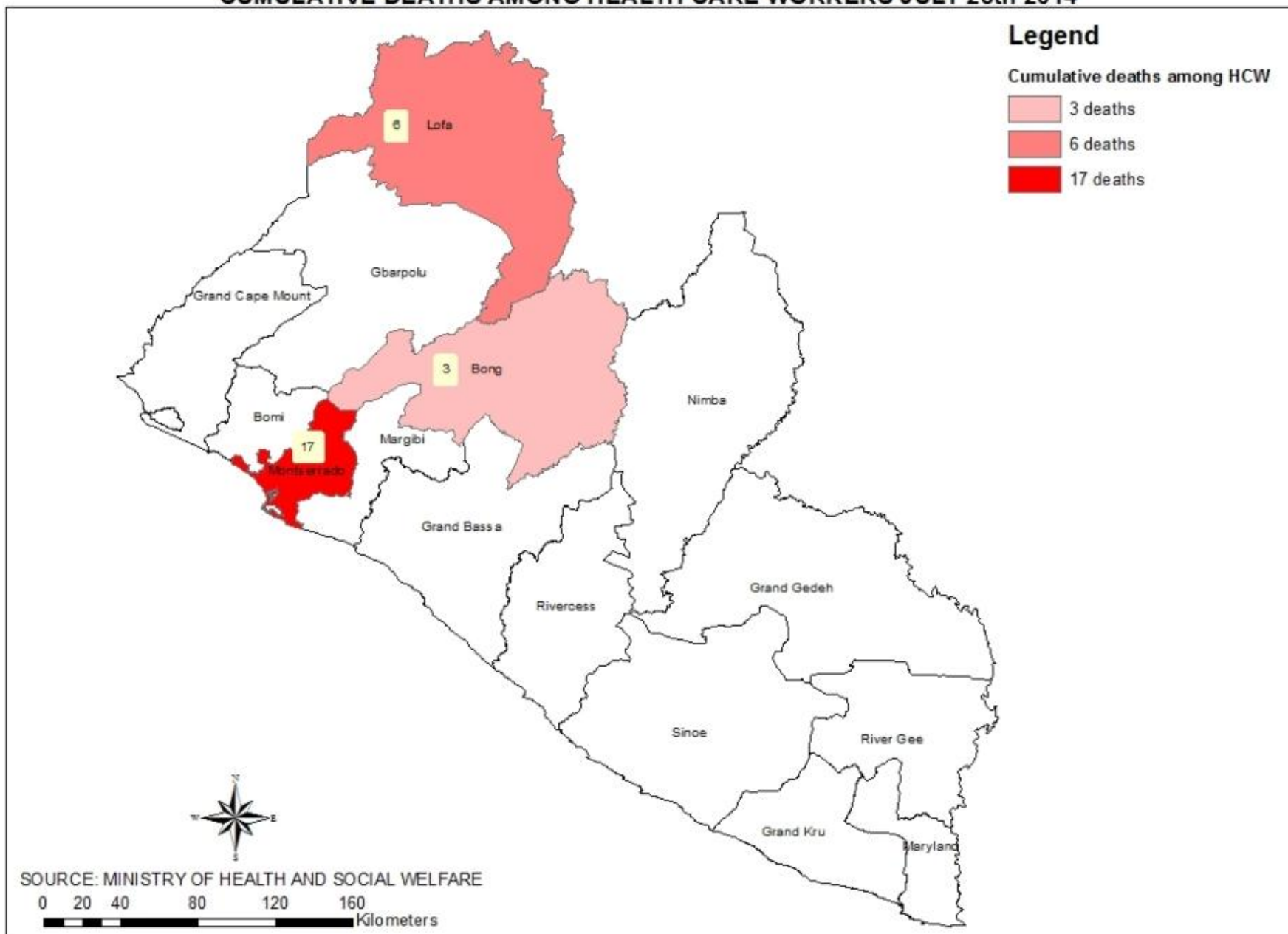


# CUMULATIVE CASES OF EBOLA VIRUS DISEASE JULY 28th 2014

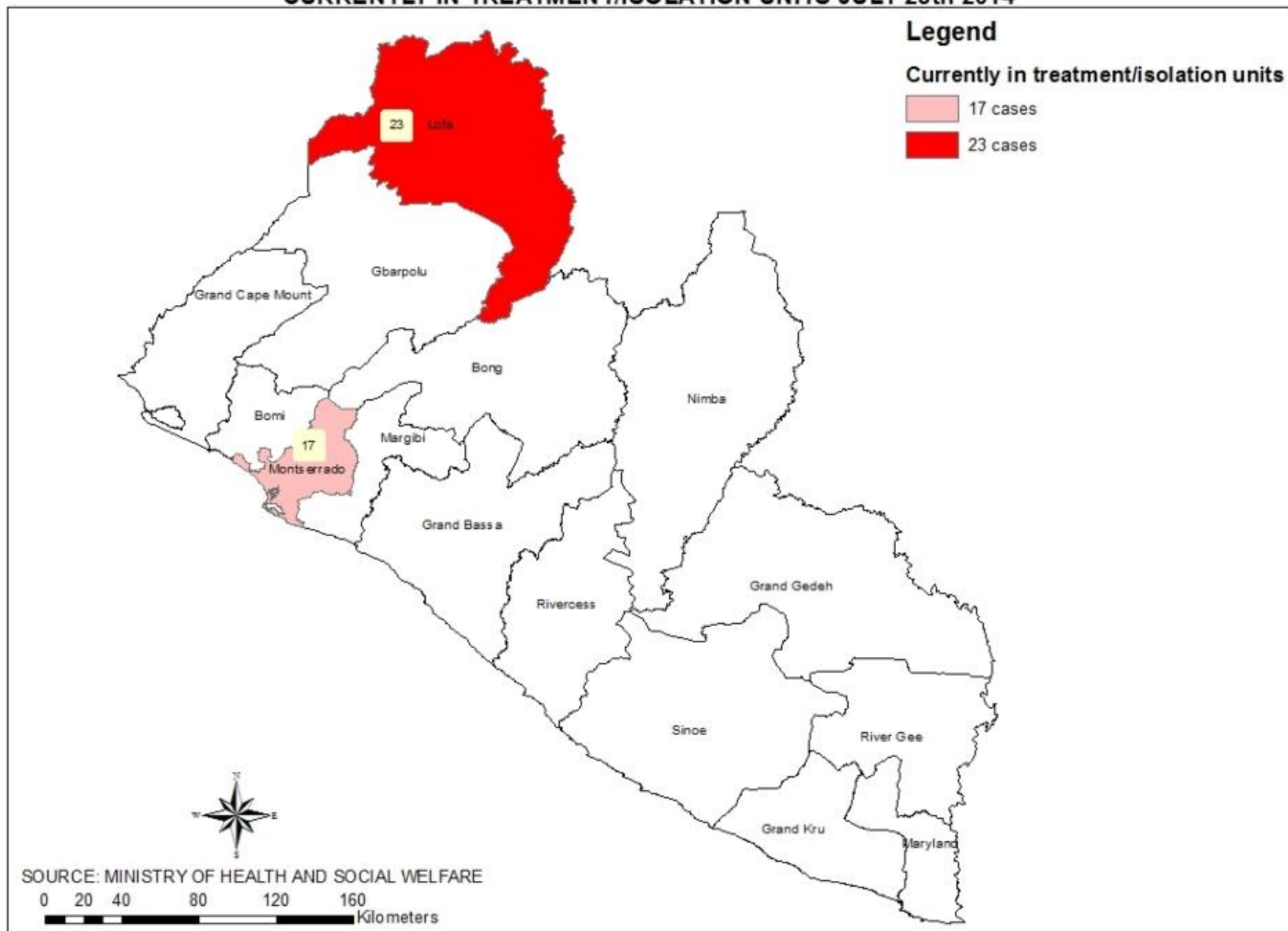




# CUMULATIVE DEATHS AMONG HEALTH CARE WORKERS JULY 28th 2014



# CURRENTLY IN TREATMENT/ISOLATION UNITS JULY 28th 2014



# Highlights

## Lofa County

- Voinjama

- Tellewoyan Hospital (Both OPD & IPD) closed due to exposure by a case in the holding room.
- Health workers threatened to stop working if risk benefit is not given. However, a draft risk-benefit budget was draft for WHO support.
- Health Workers and Burial Team also threatened boycott if they a not paid by Wednesday, July 30, 2014. There are currently six (6) bodies pending burial.
- Health Worker from Gbalakpalasu got infected.



# Highlights

- There is also a high demand for security, specifically the Police as there are threats from unidentified persons to burn the hospital and disrupt burials.
- **Popolahun**
  - The Superintendent and some town officials issued apologies for the incident leading to the destruction of an ambulance.
  - They also guaranteed the safety and security of SP, MSF and WHO in the District and County at large.

# Highlights

## Bomi County

- Both probable and Negative cases are being held in the same room with NO attention.
- County is requesting training for all health workers.

# Highlights

## Nimba County

- Two death among the probable cases/contact within the past 24 hours
- Regular Ebola coordination meeting
- 21 Laboratory personnel trained by National technical team
- Social mobilization and behavior change communication team from UNICEF dispatched to Nimba
- County leadership warned local journalists to desist from broadcasting misleading information about Ebola

# Highlights

## Nimba County

### – Constraints

- Inadequate specimen collection tube
- Lack of operational fund
- Inadequate supplies including PPEs, body bags, spray cans, stationeries and gloves
- No vehicle for burial
- Holding center at G.W. Harley Hospital is still under construction
- High denial rate of Ebola by quarters of the population
- Inadequate number of motorbikes for contact listing and tracing
- No fuel support for movements